

# **SOLAR MOUNTING SOLUTIONS**

## **RCC ROOFTOP**

[www.structurametal.in](http://www.structurametal.in)

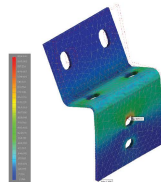
# ABOUT structūra



Structura is your trusted partner for complete solar mounting solutions, specializing in the design, fabrication, and delivery of high-performance structures tailored to commercial, industrial, and residential projects. Established with the core mission to deliver industry-leading, innovative solar solutions, we balance economic value, scientific rigor, and environmental responsibility—empowering your solar investment with the highest quality and efficiency.

With a strong foundation in solar structure design and profile fabrication, we ensure precision, durability, and ease of installation. Our solutions are engineered for affordability without compromising on strength or performance, and we proudly support custom requirements to meet the unique demands of each project.

From concept to completion, Structura is your one-stop provider for all solar mounting needs, offering tailored, cost-effective, and sustainable solutions backed by proven expertise. We welcome the opportunity to collaborate on your next solar venture and deliver unmatched value.



DESIGN &  
ENGINEERING



STRUCTURAL  
FABRICATION



HARDWARE  
ACCESSORIES



PROFILES  
OEM

## Comprehensive Solar Mounting Solutions

At Structura, we offer complete solutions to meet diverse solar mounting needs:

- **Design & Engineering:** We utilize advanced CAD and wind simulation tools to design high-performance structures that meet and exceed Indian regulatory standards, ensuring durability in the harshest environments.
- **Structural Fabrication:** From ground mounts to roof mounts, we fabricate precision-engineered structures tailored for every installation type, ensuring lasting strength and performance.
- **Hardware & Accessories:** We provide a full range of essential hardware and accessories, ensuring seamless integration and stability across all mounting systems.
- **Profiles OEM:** Specializing in OEM for solar and cross-industry profiles like PEB, we offer custom embossing and branding, delivering tailored solutions to meet specific client needs.

# PRODUCTS GUIDE

Your solar investment depends on the foundation of a well-engineered mounting system, particularly when it comes to RCC rooftop installations. At Structura, we deliver precision-engineered solutions that are tailored to suit every roof condition, ensuring optimal performance and longevity. Our RCC rooftop structures strike the perfect balance between cost-effectiveness and durability — providing exactly the strength and quality needed without unnecessary expense or compromise. Designed to withstand both environmental challenges and load-bearing requirements, our systems offer exceptional reliability with minimal maintenance. Explore our range of RCC rooftop solutions, crafted to meet the specific needs of your solar project with uncompromised quality and performance.



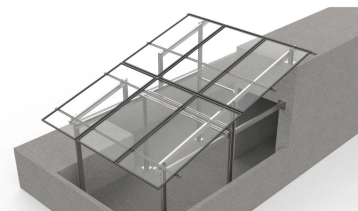
**RCC BASIC  
MOUNT**



**RCC WALKWAY  
STANDARD**



**RCC BIFACIAL  
OPTIMA**



**RCC CUSTOM  
FIT**



# PRODUCT PHILOSOPHY

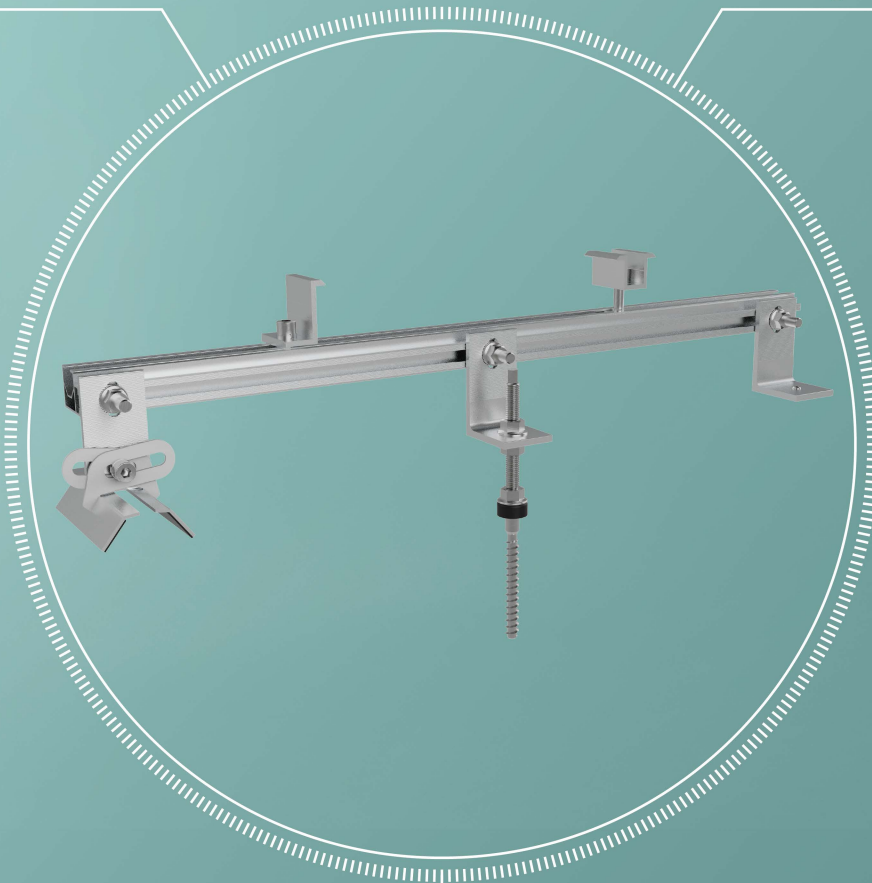
Our mounting systems are designed with your needs in mind. With a focus on Quality, our expertly crafted systems utilize premium materials and undergo rigorous testing to ensure optimal performance and longevity. We take pride in offering Value, making solar energy accessible with competitive pricing and easy installation, providing a cost-effective investment.

## QUALITY:

1. Premium Materials
2. Rigorous Testing
3. Expert Craftsmanship

## AFFORDABILITY

1. Competitive Pricing
2. Fast Easy Installation
3. Long-Term Warranties



## SUSTAINABILITY:

1. Sustainable Materials & Approach
2. Lifecycle Consideration
3. Energy Efficiency



# RCC BASIC MOUNT



## Simple, Durable, and Adaptable

The RCC Basic Mount offers a reliable, cost-effective solution for straightforward rooftop solar installations. Designed for simplicity, it ensures quick, hassle-free assembly and relocation without compromising durability. This modular system is ideal for projects where ease of installation, low maintenance, and long-term stability are paramount. Choose RCC Basic Mount for robust support with no unnecessary complexity, providing just the right strength and performance where it's needed most.

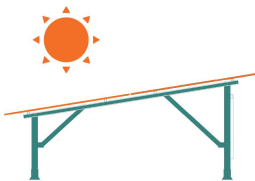


150 km/h



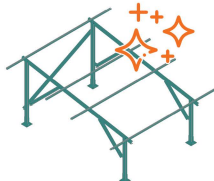
Designed to withstand wind speed up to 150 km/h

10° / 15° / 20°



Optimal solar positioning with available tilt options

GP / HDG / POWDER



Coating options that suits the project requirement

TABLE	Upto 4'	4' - 6'	6' - 8'	8' - 10'	10' - 12'
Column 1	CS-80X50X15X2	CS-80X50X15X2	CS-110X50X15X2	CS-110X50X15X2.5	CS-140X50X15X2.5
Column 2	CS-80X50X15X2	CS-80X50X15X2	CS-110X50X15X2	CS-110X50X15X2.5	CS-140X50X15X2.5
Rafter	CS-80X50X15X2	CS-80X50X15X2	CS-80X50X15X2	CS-80X50X15X2	CS-80X50X15X2
Purlin	S-41X41X2	S-41X41X2	S-41X41X2	S-41X41X2	S-41X41X2
Bracing 1	CS-80X50X15X2	CS-80X50X15X2	CS-80X50X15X2	CS-80X50X15X2	CS-80X50X15X2
Bracing 2	-	CS-80X50X15X2	CS-80X50X15X2	CS-80X50X15X2	CS-80X50X15X2
Back Bracing	-	CS-80X50X15X2	CS-80X50X15X2	CS-80X50X15X2	CS-80X50X15X2
Bracing Plate	F-200X100X5	F-200X100X5	F-200X100X5	F-200X100X5	F-200X100X5
Column Base	F/CU-200x200x5	F/CU-200x200x5	F/CU-200x200x5	F/CU-200x200x5	F/CU-200x200x5

# RCC WALKWAY STANDARD

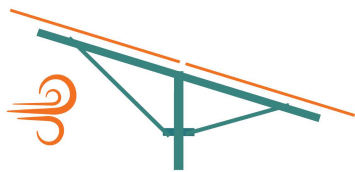


## Convenient Access for Efficient Solar Maintenance

The RCC Walkway Pro is designed to streamline the cleaning and maintenance of solar panels, ensuring that upkeep is both easier and more efficient. With integrated walkways, this system allows for safe, convenient access to elevated arrays, simplifying regular cleaning tasks. By reducing the challenges of panel maintenance, RCC Walkway Pro helps maintain optimal system efficiency and long-term performance, ensuring your solar investment continues to deliver high energy output.

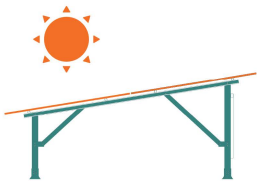


150 km/h



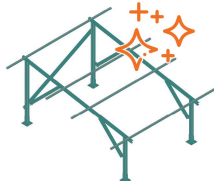
Designed to withstand wind speed up to 150 km/h

10° / 15° / 20°



Optimal solar positioning with available tilt options

GP / HDG / POWDER



Coating options that suits the project requirement

TABLE	6' - 8'	8' - 10'	10' - 12'
Column 1	CS-110X50X15X2	CS-110X50X15X2.5	CS-140X50X15X2.5
Column 2	CS-110X50X15X2	CS-110X50X15X2.5	CS-140X50X15X2.5
Rafter	CS-110X50X15X2	CS-110X50X15X2	CS-110X50X15X2
Purlin	S-41X41X2	S-41X41X2	S-41X41X2
Bracing 1	CS-80X50X15X2	CS-80X50X15X2	CS-80X50X15X2
Bracing 2	CS-80X50X15X2	CS-80X50X15X2	CS-80X50X15X2
Back Bracing	CS-80X50X15X2	CS-80X50X15X2	CS-80X50X15X2
Bracing Plate	F-200X100X5	F-200X100X5	F-200X100X5
Column Base	F/CU-200x200x5	F/CU-200x200x5	F/CU-200x200x5

## Walkway Clamp



# RCC BIFACIAL OPTIMA

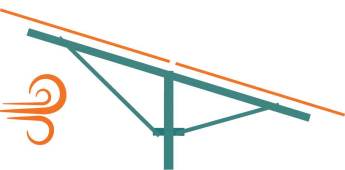


## Engineered for Maximum Bifacial Panel Efficiency

The RCC Bifacial Optima is engineered specifically for bifacial solar panels, ensuring uniform light exposure across both surfaces. Traditional systems often obstruct rear panel light, creating hotspots and reducing energy output. Our optimized design enhances light reflection and minimizes shading, boosting energy generation and preventing premature degradation. This system maximizes the power potential of bifacial panels while ensuring longevity and consistent performance, making it the ideal choice for high-efficiency solar projects..

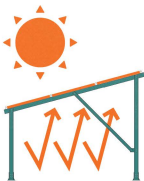


150 km/h



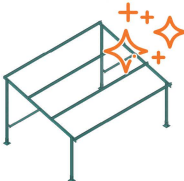
Designed to withstand wind speed up to 150 km/h

10° / 15° / 20°



Optimal solar positioning with available tilt options

GP / HDG / POWDER



Coating options that suits the project requirement

TABLE	Upto 4'	4' - 6'	6' - 8'	8' - 10'	10' - 12'
Column 1	CS-80X50X15X2	CS-110X50X15X2	CS-110X50X15X2	CS-110X50X15X2.5	CS-140X50X15X2.5
Column 2	CS-80X50X15X2	CS-110X50X15X2	CS-110X50X15X2	CS-110X50X15X2.5	CS-140X50X15X2.5
Rafter	CS-110X50X15X2	CS-110X50X15X2	CS-110X50X15X2	CS-110X50X15X2	CS-110X50X15X2
Purlin	HU-60X20X35X2.5	HU-60X20X35X2.5	HU-60X20X35X2.5	HU-60X20X35X2.5	HU-60X20X35X2.5
Bracing 1	CS-80X50X15X2	CS-80X50X15X2	CS-80X50X15X2	CS-80X50X15X2	CS-80X50X15X2
Back Bracing	-	CS-80X50X15X2	CS-80X50X15X2	CS-80X50X15X2	CS-80X50X15X2
Bracing Plate	F-200X100X5	F-200X100X5	F-200X100X5	F-200X100X5	F-200X100X5
Column Base	F/CU-200x200x5	F/CU-200x200x5	F/CU-200x200x5	F/CU-200x200x5	F/CU-200x200x5

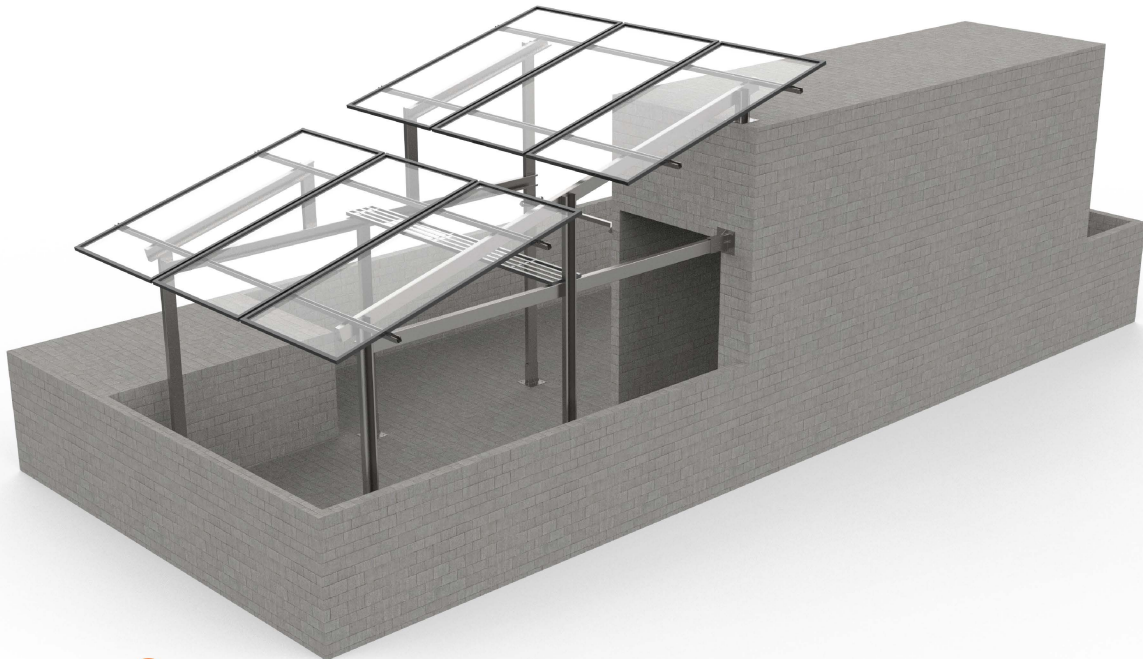


# RCC CUSTOM FIT



## Tailored Mounting Solutions for Unique Rooftop Challenges

The RCC Custom Fit is your bespoke solution for complex rooftop layouts and specialized project needs. Custom-engineered to match your roof's unique characteristics, this system provides optimal strength, durability, and performance under any environmental conditions. Whether you have an irregular roof shape or specific structural requirements, RCC Custom Fit ensures a seamless installation tailored precisely to your project. Backed by advanced simulations, each design guarantees resilience and reliability in the long term.



We gather detailed project and site specifications, including CAD files and accurate measurements, to ensure a perfect foundation for the custom solution.



Our team creates an initial design tailored to your project needs. The layout is then shared for approval before moving on to further structural analysis



We simulate the design against extreme conditions, exceeding national standards, to ensure the system is robust and resilient before finalizing the solution.

1

2

3

6

5

4

We conduct thorough technical checks and reviews to verify the quality and stability of the structure before handing it over for optimal performance.

Skilled team assembles the custom-fit system onsite, adjusting and installing it to match your unique terrain and requirements.

Once finalized, we manufacture and process all necessary profiles and parts, leaving final adjustments for onsite work to ensure a perfect fit with your site conditions.





Structura is more than just a structure provider—we're your partner in delivering solar solutions that are built to last, exceed expectations, and maximize project returns. With our unwavering commitment to innovation, quality, and customer satisfaction, you can trust us to be the backbone of your solar success

## Commitment to Innovation & Technology

- **Advanced Engineering Tools:** We utilize cutting-edge CAD and wind simulation software to rigorously test every design, ensuring they meet and exceed industry standards.
- **Continuous R&D:** Our dedicated R&D team consistently innovates, striking the perfect balance between performance, cost-efficiency, and quality.
- **Optimized for Harsh Conditions:** Our solutions are simulated under the most challenging environmental scenarios, guaranteeing long-term reliability and performance.

## Complete Solution Provider

- **Comprehensive Product Range:** Whether it's ground-mounted, metal roof-mounted, or RCC-mounted systems, we offer a full spectrum of solutions to meet all your project needs.
- **End-to-End Service:** From initial design and simulations to manufacturing and installation training, we handle every stage in-house, ensuring seamless execution and project success.
- **Custom Profiles & Accessories:** In addition to our mounting systems, we offer a complete range of hardware and accessories, including fasteners and custom profiles, providing everything for smooth installations.

## Trusted Manufacturing Expertise

- **Proven Manufacturing Capacity:** With over 600 MT/month in-house production capacity, we have the capability to meet the demands of even the largest projects.
- **Modular, Pre-Engineered Solutions:** Our systems are designed for easy assembly and minimal on-site fabrication, ensuring faster installations while maintaining structural integrity.
- **Stringent Quality Control:** Each product undergoes thorough testing for durability and compliance with national and international standards, ensuring reliability in the field.

## Customer-Centric Approach

- **Tailored Solutions:** We recognize that every project is unique. Our team works closely with you to deliver custom-fit solutions based on the specific requirements of your project.
- **Reliable Support:** From the design phase to post-installation, we provide ongoing support, ensuring your project runs smoothly at every stage.
- **Installation Training:** We equip your team with the knowledge and skills needed for efficient on-site installations, offering comprehensive training for your crews.



Located in Chhatrapati Sambhajnagar (formerly Aurangabad), at the heart of Maharashtra, we are perfectly positioned to serve West and Central India with efficient logistics. Our proximity enables reduced transportation costs and quicker delivery, ensuring streamlined support even for small-scale projects.

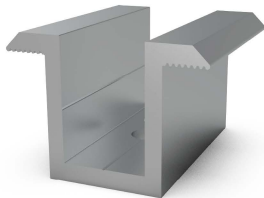
# ACCESSORIES



Your solar investment is as solid as its weakest link. Don't jeopardize your investment with sub-par choices for mounting systems and accessories – the risk to your investment is real. Explore our extensive range of premium components and accessories, curated to ensure reliability and performance. Choose Structura for a secure solar future.

Structura manufactures mounting components and accessories in-house or source from genuine & reliable vendors after strict quality checks and incisive scrutiny.

## Mid Clamp



Aluminium 6063-T6  
Compatible with all PV modules

## End Clamp



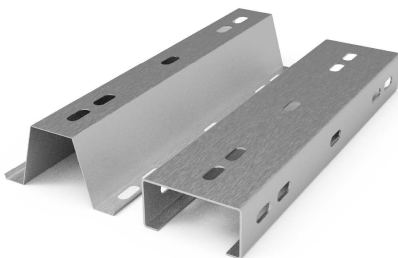
Aluminium 6063-T6  
Sizes Available - 30 to 45 mm

## L Clamp



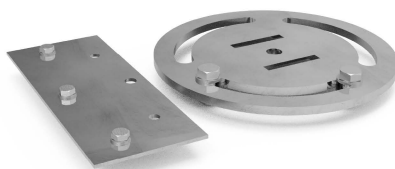
Aluminium 6063-T6  
L85 x W50 x T5 mm

## Rail Connector



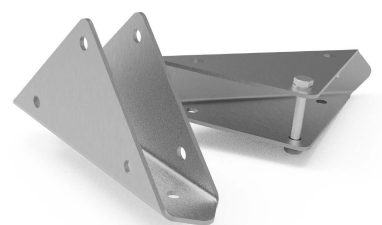
HDG Steel  
Length 400 mm | Customizable

## Connector Plate



GI, HDG Steel  
Custom Size

## U Brackets



HDG Steel  
100 mm Height, 50 mm Width



# ACCESSORIES



Allen Key Bolt



T - Bolt



Hex Bolt



Self Driving Screw



Rivets



Adhesive Glue



Spring Washers



Flange Nut

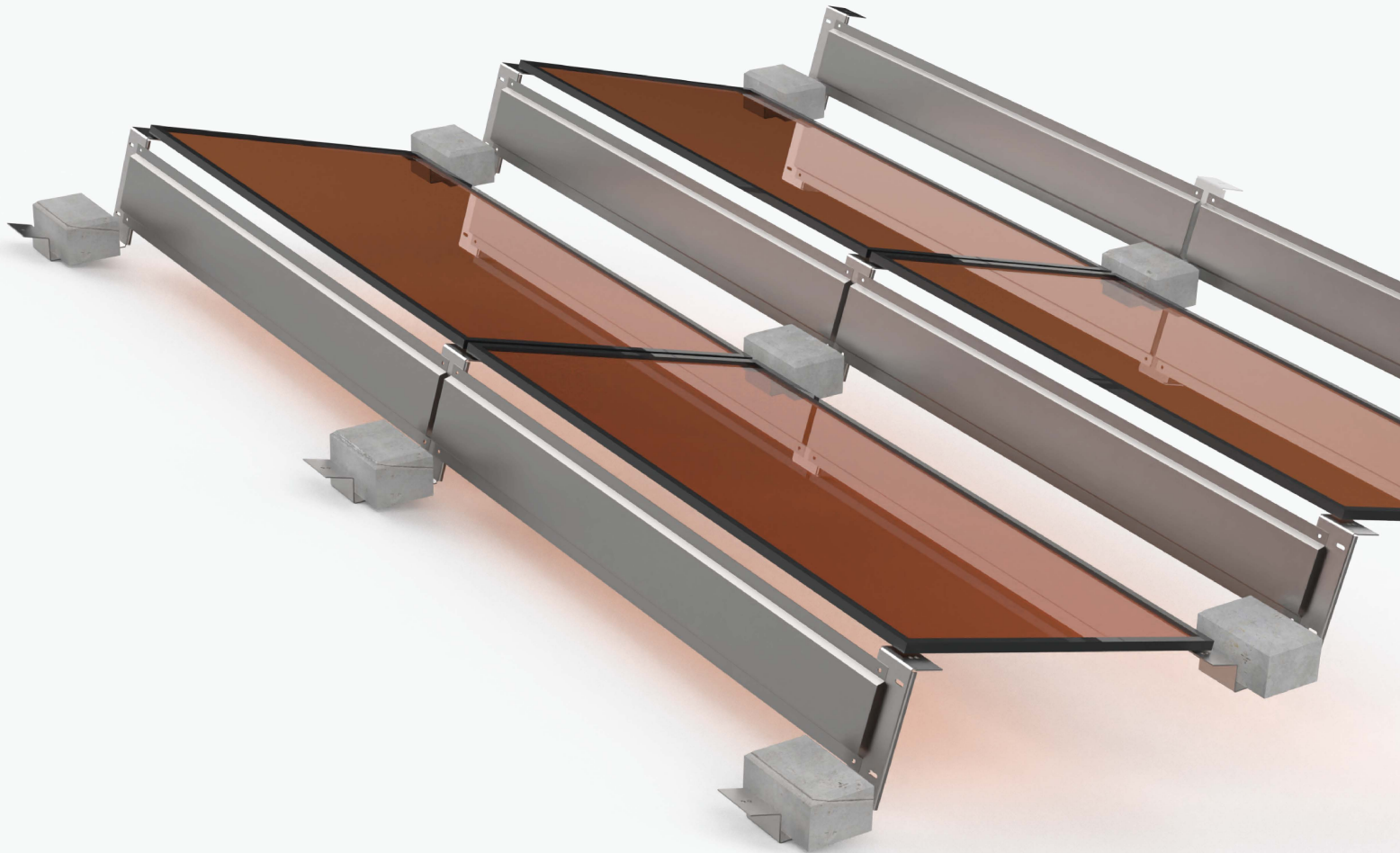


EPDM Tape



Discover our mounting system-specific accessories kit, available without any minimum requirements. Product certification provided upon request.

Our accessories and components are regularly updated; actual products may differ from images.



# BUILDING THE FUTURE

[www.structurametal.in](http://www.structurametal.in)

**STRUCTURA METAL PRIVATE LIMITED**

Off: G No. 132, Karodi Naka  
Aurangabad, Maharashtra. 431136  
Ph: +91-8005225348